

# Port City Amateur Radio Club

**June 3, 2026**

[PortCityARC@groups.io](mailto:PortCityARC@groups.io) – Main  
Communications Channel

[www.W1WQM.org](http://www.W1WQM.org)

**Sunday 10 AM Seacoast Net – 3895 kHz –  
General Discussion Rounds**

**Sunday 7 PM 2 M Net – W1WQM Repeater  
– New Ham Comms**

**First Wednesday of Month – POTA Picnic  
Hampton Beach – noon**



Please Set Cell  
Phones to Silent



# Officers & Members Introduction

- **Mark – K1RX – President, Trustee NM1JY**
- **Thom - K1TKT - Vice President**
- **Bonnie - N1IIM - Treasurer**
- **Mark – KC1UKO – Secretary**
- **Ken – N1RP – Trustee, W1WQM**
  
- **NEW VISITORS**
- **Around the room introductions with your:**
  - **Name**
  - **Call (use phonetics)**
  - **Home Location**
  - **Club Office Held (if any)**



# Coming Up Tonight

- **Donation Dinner – Thank You**
- **Announcements**
- **Club Calendar**
- **Treasurer’s Report**
- **Old Business**
- **New Business – Elections, Field Day**
- **Main Topic – PCARC History**
- **Lightning Rounds**
- **Intermission – 50/50 Tickets on Sale!**
- **Lightning Rounds**
- **50/50 Drawing**
- **Motion to Adjourn**



# Announcements

- **Member License Upgrades**
- **Now Membership at 120 Active Members**

# Coming Up Soon – Club Calendar

- **VE Test session – June 6**
- **ARES**
- **Lab Night – Switch Build Starts September**
- **Museum Ships Weekend – Albacore, Thresher – June 6-7**
- **Portsmouth Market Square Day – Saturday, June 13**
- **ARRL Year of the Club – 24 hour on-air Event June 20 W1WQM/75**
- **ARRL Field Day June 26-28**

# Old Business

Field Day Apparel – Club Purchase - AA1IT

Portsmouth Market Square Day June 13 – Dave, KX1A



# Portsmouth Market Square Day June 13



- Volunteers: KX1A, K1RX, K1TKT, KC1YFL, AB10 – **need at least 5 more** to come hang with the coolest members of PCARC!
- **50,000** visitors through the day
- Ideas- 3 “stations”
  - >Interactive CW
  - >Interactive SDR
  - >Interactive VHF – repeater
- Collateral, cards, posters, trifolds.
- Promote on website.
- Planning Zoom Call – Monday June 8<sup>th</sup>.

A large blue balloon is shown on the left side of the slide, partially cut off by the edge. It is being held up by a red pushpin with a gold-colored stem, which is stuck into a white surface. The balloon is inflated and its surface is smooth and shiny.

# New Business

**RAS-4 Project – Pre-payment now being collected**

**By-Laws Proposed Changes – Details to follow**

**Nominating Committee PCARC (me) – Election**

**Field Day Plans/Discussion**

**Any other NEW Business?**

Main Topic Tonight

Club History

Ken, N1RP

**W1WQM**

**THE HISTORY OF THE**

*Established June, 1951 · Portsmouth, New Hampshire*

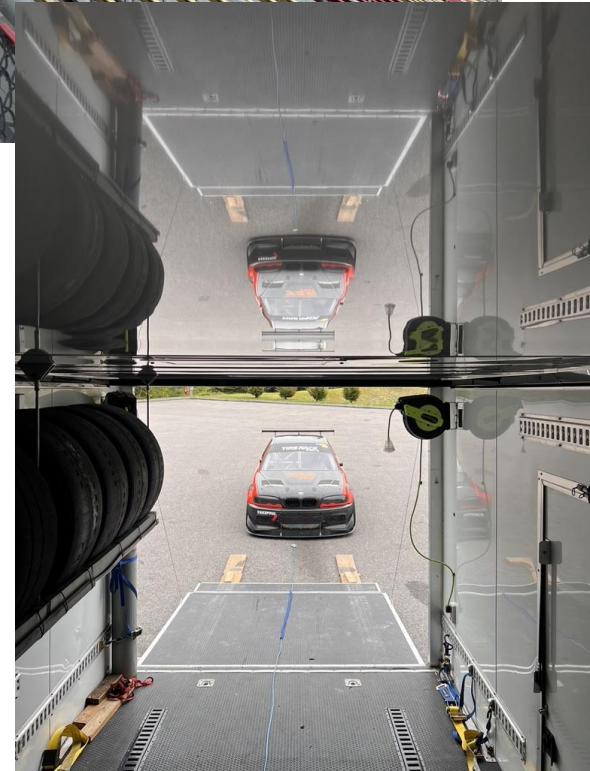
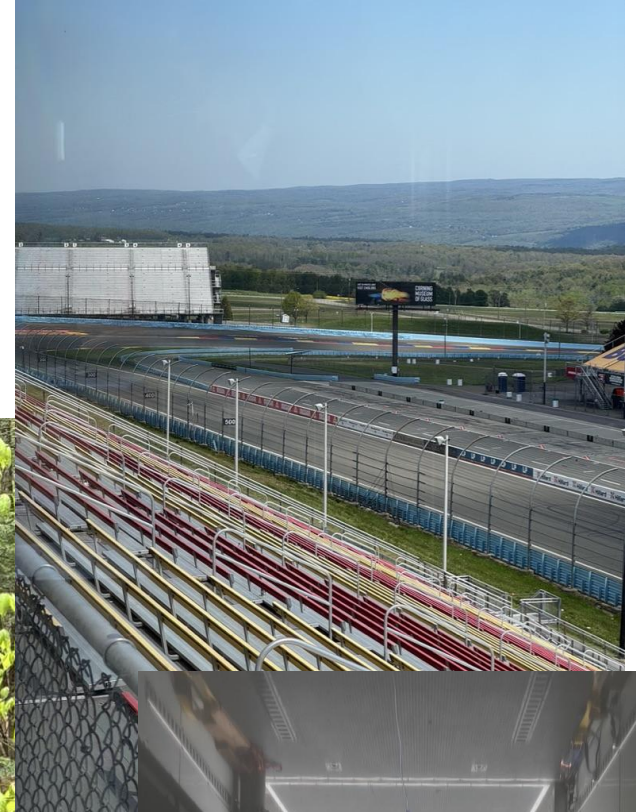
*Celebrating 75 years!*

*Lightning Rounds*  
*POTA*

*Thom, K1TKT*

# May POTAdventure Summary

- 2350 miles driven
- 9 Park Activations
- 7 States
- 1 eyeball QSO
- This summer: Basel to Amsterdam, QRP





# POTA Summer Picnics

- July 25<sup>th</sup>
- Aug 29<sup>th</sup>
- Locations to be announced
- Time: Noon until ?

# IT'S INTERMISSION TIME!



Visit Our

## *Snack Bar!!*

Buy your 50/50 Tickets  
Return in 20 Minutes

# Summer Contests

ARRL Inter. Digital Contest	18Z Jun 6 to 24Z Jun 7
ARRL Field Day	18Z Jun 27 to 21Z Jun 28
IARU HF World Champ.	12Z Jul 11 to 12Z Jul 12
WRTC	12Z Jul 11 to 1159Z Jul 12
IOTA	12Z Jul 26-27

## State/Province QSO

Kentucky	13Z June 6 to 01Z June 7
Atlantic Canada	14Z June 7 to 01Z June 8 (New Brunswick, Newfoundland, Nova Scotia, Prince Edward Island)
ARRL Club	00Z Jun 20 to 2359Z Jun 21
West Virginia	16Z June 20 to 04Z June 21
Alabama	15 Jul 15 to 03Z Jul 26
Maryland/DC	14Z Aug 8 to 04Z Aug 9
North American	18Z Aug 15 to 06Z Aug 16
Hawaii	14Z Aug 22 to 02Z Aug 24
Ohio	16Z Aug 22 to 04Z Aug 23
Kansas	14Z Aug 29 to 02Z Aug 30 and 14Z Aug 20 to 20Z Aug 30
U.S Islands	12Z Aug 29 to 03Z Aug 30 (Four Tree, Goat, New Castle, Nobles, Pierce, Shapleigh)

Plus many others. Checkout [www.contestcalendar.com](http://www.contestcalendar.com) for more information.

An aerial photograph showing a white pickup truck on the left with a large, complex lattice tower structure mounted on its bed. To its right is a white sedan. The vehicles are parked on a grassy area with some utility wires visible in the background.

**50/50 Drawing**

Motion to Adjourn

A solid green horizontal bar located at the bottom of the slide.